



COMP PLAN



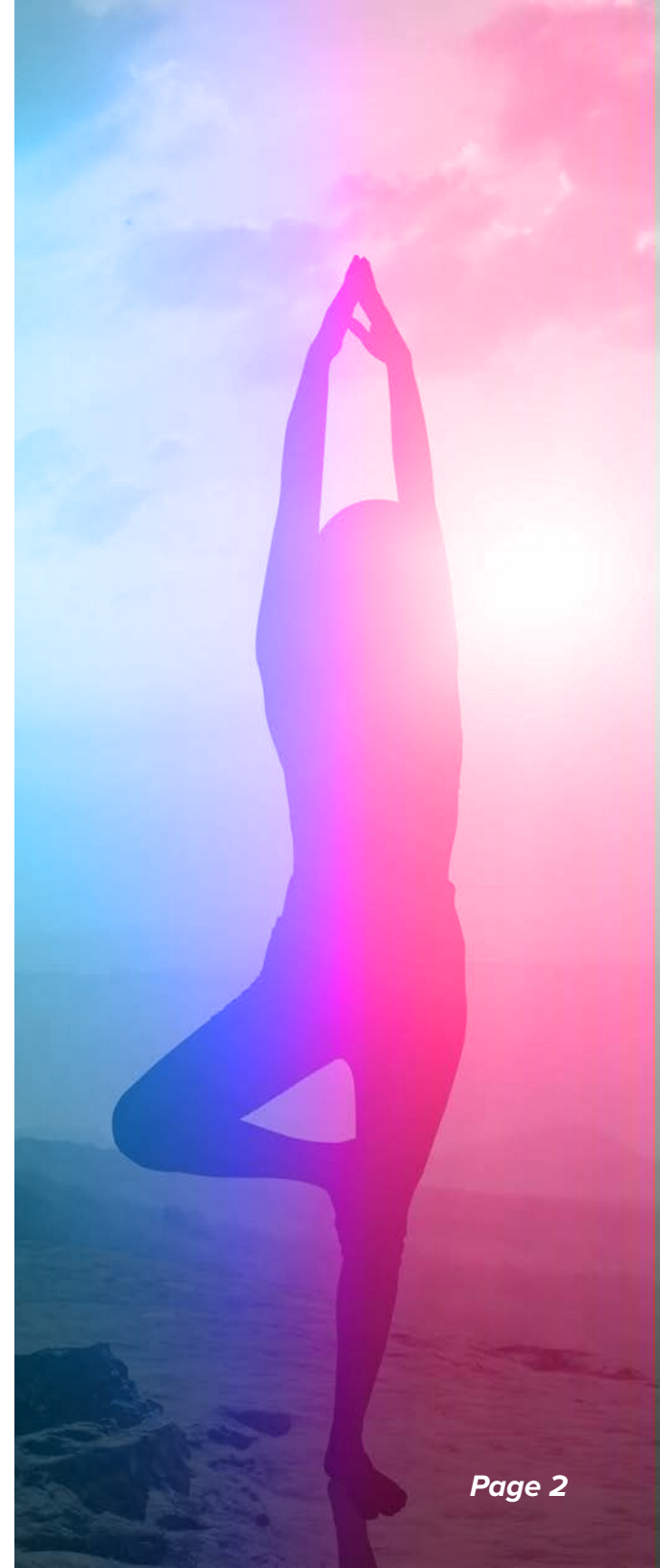
There are **7** ways to earn Compensation and Rewards in the O'SNAP Compensation Plan.

- 1.** Retail Sales
- 2.** Quick Start Bonus
- 3.** Binary Step Pay
- 4.** Matching Pay
- 5.** Residual Pay
- 6.** Profit Sharing Pool TBD
- 7.** Trips and Promotional Awards

Sign up Fee \$49

Yearly \$49 renewal. Initial annual fee is waived with the purchase on an Initial Enrollment Pack*

*Annual fee waiver for a period of 12 months. Ambassador must remain active.





Qualifying for commissions is easy!

Qualifications to earn commissions is achieved by having a retail customer order(s) O'SNAP product(s) or by personally purchasing products for your use that creates at least 20CV.

Remaining Active to earn commissions on customer and downline purchases is achieved by retail customer order(s) of O'SNAP product(s) or personal order(s) of O'Snap products that creates at least 20CV within a 4 week rolling period. (current week plus previous 3 weeks) Commissions are paid on the assigned commissionable volume value. Ambassadors will accumulate the volume (CV) created by the sales of products by their team.

As your sales teams grow, so will your volume (CV). Your volume will accumulate and be held so long as an Ambassador remains active. The more sales of products by your team, the greater your volume will grow.

If an account becomes inactive, the account will no longer accumulate new volume. The existing volume on the left and right sales teams will remain available to restart your sales efforts for four weeks before it is no longer available for use.





7 Ways to Earn

Upon completing the activation, an Ambassador can start to benefit from all the incredibly rewarding and lucrative components of the O'SNAP Compensation plan as described here.

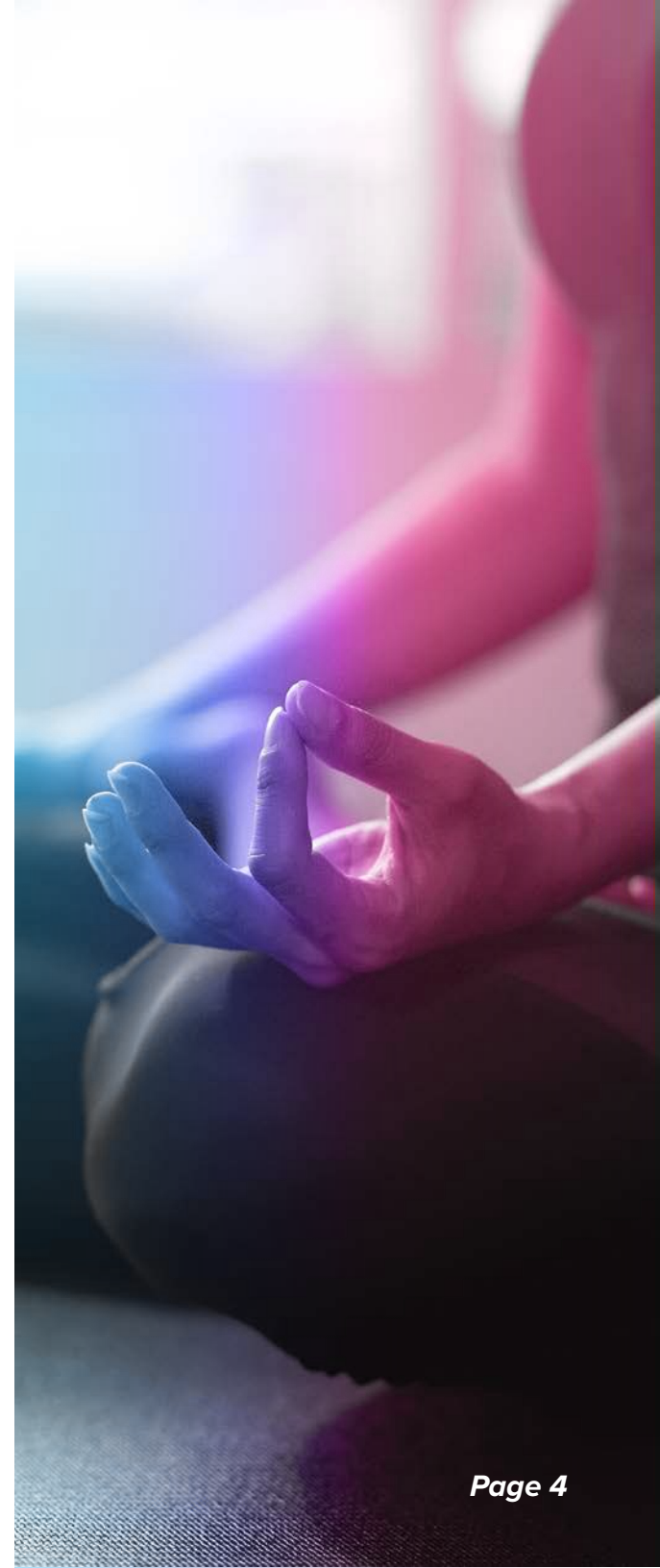
1. Retail Sales

Retail profits are listed in the below chart and are a set amount. A Retail Customer is a customer who orders through the Ambassadors retail website or buys directly from the Ambassador.

When a Retail Customer purchases online, the company will fulfill the order and directly support the 100%, 30-day money-back guarantee. The Ambassador will receive a rebate of the set amount for retail sales through the Ambassadors retail website.

Products

Product	Ambassador Price / CV	Customer Price / CV	Retail Profit
Sleep in a Snap	\$54.95 / 25	\$54.95 / 20	\$15
Surge in a Snap	\$54.95 / 25	\$54.95 / 20	\$15
Reverse in a Snap	\$69.95 / 35	\$69.95 / 25	\$20
Complete in a Snap	\$54.95 / 25	\$54.95 / 20	\$15





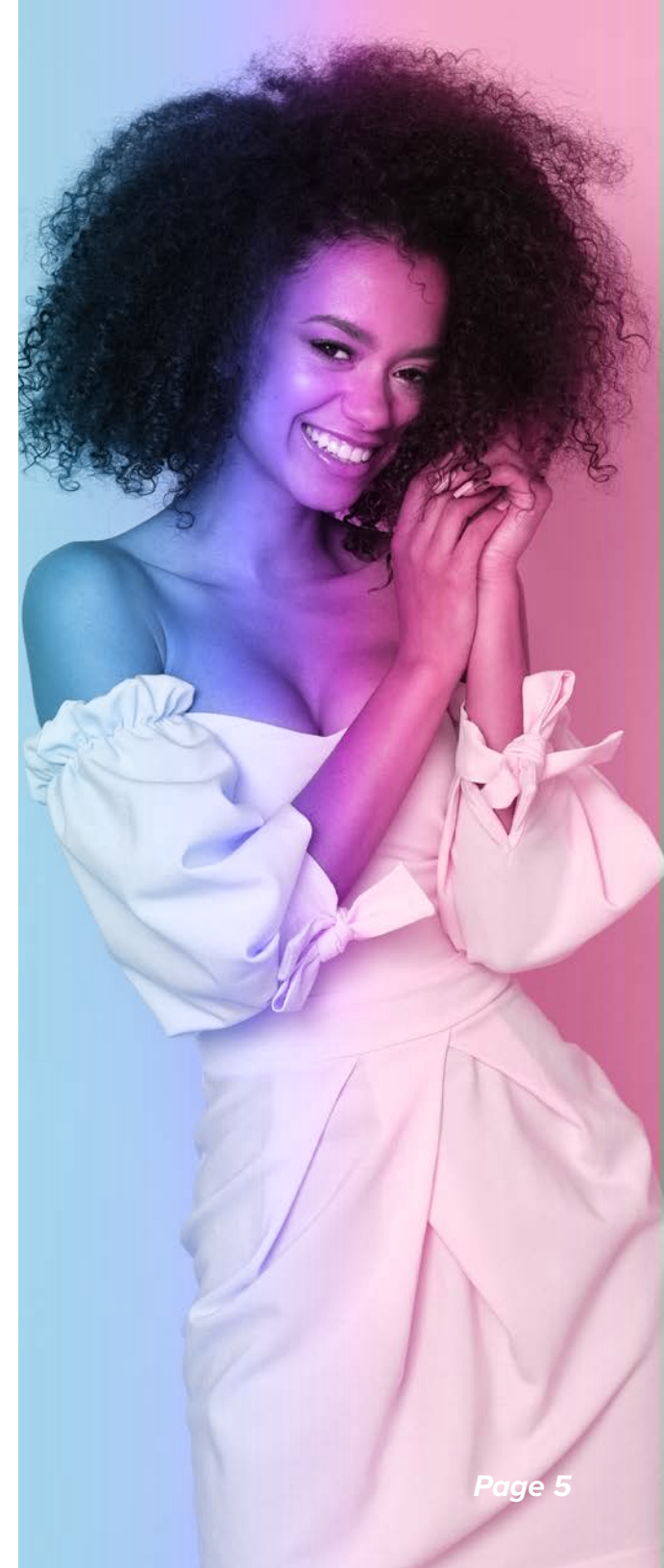
7 Ways to Earn *continued*

2. Quick Start Bonus

When a new Ambassador enrolls, they have the option to purchase an Initial Enrollment Product Package. The new Ambassador's Enroller will receive a Quick Start Bonus.*

Quick Start Bonus Packs	Wholesale Price	Volume	Bonus
PowerPack 1	\$300	100CV	\$80 to Enroller
PowerPack 2	\$500	120CV	\$140 to Enroller
PowerPack 3	\$1,000	300CV	\$250 to Enroller

*The Enroller must be active to receive the Quick Start Bonus.





7 Ways to Earn *continued*

3. Binary Step Pay

To earn binary commissions you must have personally enrolled two Ambassador's who are currently active with 20PCV, one placed in your left team and one in your right team.

At the end of each week, your Left Team Volume (LTV) and your Right Team Volume (RTV) will be totaled, and bonuses will be paid based on meeting the left and right volume requirements. This matching left and right team volume will be paired up against the below step chart and you will be paid at the highest step you achieve each week. If you achieve all 5 steps in a single week an extra \$500 bonus will be provided. You can achieve unlimited Steps in a single week. When you max out the 5 steps 4000CV per team will be deducted. Simply start the steps over again and again. The \$500 bonus is only paid one time a week, but can be earned every week.

Step	Total Left LTV	Step Pay	Total Right RTV
1	100	\$25	100
2	500	\$100	500
3	1,000	\$200	1,000
4	2,000	\$400	2,000
5	4,000	\$800	4,000

In this example » Week Ends 12,050 LTV / 16,000 RTV

Deduct steps

4,000CV/4,000CV = **\$800** (Step Pay)

5 step in a week bonus = **\$500** (Step Pay)

4,000CV/4,000CV = **\$800** (Step Pay)

4,000CV/4,000CV = **\$800** (Step Pay)

12,000CV/12,000CV total Step Pay = **\$2,900**

Carryover to next week 50CV LTV / 4000CV RTV





7 Ways to Earn *continued*

4 Matching Pay

As an Ambassador builds two teams and starts to earn Binary Step Pay, they will help those they personally enroll and their team members to do the same. As the teams grow and more members of the team start to earn Binary Step Pay, starting at the rank of Silver you can earn up to 3 levels of Matching Pay on their Personally Sponsored teams. The percent of Matching Pay is based on your rank and the chart below. Rank level requirements are detailed in the rank grid.

**Matching Pay does not pay on the \$500 Binary Step Pay 5 cycle bonus.*

Rank	Match Level 1	Match Level 2	Match Level 3
Silver	10%		
Gold	15%		
Platinum	20%		
Ruby	25%	10%	
Emerald	25%	15%	
Diamond	30%	20%	
Blue Diamond	35%	25%	
Red Diamond	40%	30%	
Crown Diamond	50%	45%	
Crown Royal	50%	50%	15%





7 Ways to Earn continued

5. Residual Pay

As you advance in rank you have the opportunity to earn additional commissions. The Chart below indicates the number of levels you can earn as well as the associated pay rank required to take advantage of this enhanced earning potential. Dynamic Compression, if level is inactive then compression to next active level. Ambassadors and Customer's *first orders* do not contribute to Residual Pay. Pays weekly.

Rank	Level 1	Level 2	Level 3	Level 4	Level 5	Level 6	Level 7
Bronze	7%	7%					
Silver	7%	7%	7%				
Gold	7%	7%	7%				
Platinum	7%	7%	7%	7%			
Ruby	7%	7%	7%	7%			
Emerald	7%	7%	7%	7%	7%		
Diamond	7%	7%	7%	7%	7%		
Blue Diamond	7%	7%	7%	7%	7%	7%	
Red Diamond	7%	7%	7%	7%	7%	7%	
Crown Diamond	7%	7%	7%	7%	7%	7%	7%
Crown Royal	7%	7%	7%	7%	7%	7%	7%

6. Profit Sharing Pools

TBD at our First National Event

7. O'SNAP Trips and Promotions

TBD at our First National Event

60% Cap Rule » O'SNAP will pay up to 60% of all company volume.



Ranks	Basic Qualifications	Total Group Volume Enrollment Tree*	Quick Start Bonus	Binary Step Pay	Matching Pay	Residual Pay	Profit Sharing Pool
Ambassador	» Meet minimum active requirement of 20PCV	0	Y	N	N	N	N
Ambassador Elite	» Meet minimum active requirement of 20PCV. Binary Qualified: One personally enrolled Ambassador on the right and left leg; each with 20PCV	1,000	Y	Y	N	N	N
Bronze	» Meet minimum active requirement of 20PCV. Binary Qualified: One personally enrolled Ambassador on the right and left leg; each with a 20PCV. Must have 1 Active Retail Customer.	2,500	Y	Y	N	Y	N
Silver	» Meet minimum active requirement of 20PCV. Binary Qualified: One personally enrolled Ambassador on the right and left leg; each with a 20PCV. Must have 1 Active Retail Customer.	5,000	Y	Y	10% LVL 1	Y	N
Gold	» Meet minimum active requirement of 20PCV. Binary Qualified: One personally enrolled Ambassador on the right and left leg; each with a 20PCV. Must have 2 Active Retail Customers.	10,000	Y	Y	15% LVL 1	Y	N
Platinum	» Meet minimum active requirement of 20PCV. Binary Qualified: One personally enrolled Ambassador on the right and left leg; each with a 20PCV. Must have 2 Active Retail Customers.	15,000	Y	Y	20% LVL 1	Y	N
Ruby	» Meet minimum active requirement of 40PCV. Binary Qualified: One personally enrolled Ambassador on the right and left leg; each with a 20PCV. Must have 2 Active Retail Customers.	30,000	Y	Y	25% LVL 1 10% LVL 2	Y	N
Emerald	» Meet minimum active requirement of 40PCV. Binary Qualified: One personally enrolled Ambassador on the right and left leg; each with a 20PCV » At least one, from enrollment tree, active pay rank Ruby in the current or previous 3 commission weeks. Must have 3 Active Retail Customers.	50,000	Y	Y	25% LVL 1 15% LVL 2	Y	N
Diamond	» Meet minimum active requirement of 40PCV. Binary Qualified: One personally enrolled Ambassador on the right and left leg; each with a 20PCV » At least one, from enrollment tree, active pay rank Emerald in the current or previous 3 commission weeks. Must have 3 Active Retail Customers.	100,000	Y	Y	30% LVL 1 20% LVL 2	Y	N
Blue Diamond	» Meet minimum active requirement of 80PCV. Binary Qualified: One personally enrolled Ambassador on the right and left leg; each with a 20PCV » At least one, from enrollment tree, active pay rank Diamond in the current or previous 3 commission weeks. Must have 4 Active Retail Customers.	150,000	Y	Y	35% LVL 1 25% LVL 2	Y	Y
Red Diamond	» Meet minimum active requirement of 80PCV. Binary Qualified: One personally enrolled Ambassador on the right and left leg; each with a 20PCV » At least one, from enrollment tree, active pay rank Blue Diamond in the current or previous 3 commission weeks. Must have 4 Active Retail Customers.	250,000	Y	Y	40% LVL 1 30% LVL 2	Y	Y
Crown Diamond	» Meet minimum active requirement of 80PCV. Binary Qualified: One personally enrolled Ambassador on the right and left leg; each with a 20PCV » At least one, from enrollment tree, active pay rank Red Diamond in the current or previous 3 commission weeks. Must have 4 Active Retail Customers.	500,000	Y	Y	50% LVL 1 45% LVL 2	Y	Y
Crown Royal	» Meet minimum active requirement of 80PCV. Binary Qualified: One personally enrolled Ambassador on the right and left leg; each with a 20PCV » At least one, from enrollment tree, active pay rank Crown Diamond in the current or previous 3 commission weeks. Must have 4 Active Retail Customers.	750,000	Y	Y	50% LVL 1 50% LVL 2 15% LVL 3	Y	Y

*No more than 60% of volume requirement from any one Enrollment team



Basic Terms to Know

CV » Also known as Commissionable Volume, this volume is assigned to a product.

PCV » Personal Commissionable Volume, is a volume that is created when products are purchased by you, your personal retail customers that have a CV value tied to it.

LTV » Known as Left Team Volume, is a collection of all the CV on someone's left binary team.

RTV » Known as Right Team Volume, is a collection of all the CV on someone's right binary team.

Weekly Bonus Period » The weekly Bonus period starts each Friday morning at 12:00 Central Time and ends on Thursday Night at 11:59:59 Central Time.

Carry Over Volume (COV) » Any commissionable volume (CV) that was not commissioned in the current weekly period will be carried over to the next period. And will continue to carry over as long as the Ambassador remains Active.

Active Ambassador » Meet minimum monthly active requirement of 20CV product purchase within a rolling 31 day cycle.

Active Customer » Meet minimum monthly active requirement of 20CV product purchase within a rolling 31 day cycle.

Retail Customer » As a person that buys O'SNAP products either directly from a O'SNAP Ambassador or from a O'SNAP Ambassador's Retail online store.

TGV » Known as Total Group Volume, is the sum of All Volume in a given period. No more than 60% of volume can come from a single enrollment leg.

